



Committee: Directly to Council
Committee Review: N/A
Staff: Ludeen McCartney-Green, Legislative Attorney
Pamela Dunn, Senior Legislative Analyst
Jeffrey L. Zyontz, Council Senior Fellow
Purpose: Final action – vote expected
Keywords: Redistricting Map, Expedited Bill 41-21, Council District Boundaries

ADDENDUM
AGENDA ITEM #4A
December 7, 2021
Action

SUBJECT

Redistricting, Expedited Bill 41-21, Elections – Council Districts – Boundaries
Lead Sponsor: Council President at the Request of Redistricting Commission

EXPECTED ATTENDEES

N/A

COUNCIL DECISION POINTS & COMMITTEE RECOMMENDATION

N/A

DESCRIPTION/ISSUE

Expedited Bill 41-21 would:

- (1) revise the boundaries of Council districts; and
- (2) generally amend the law related to elections and redistricting

SUMMARY OF KEY DISCUSSION POINTS

- Evaluation of additional changes to the revised Commission map as shown in the December 2 staff report.
- An interactive Geographic Information System (GIS) version of the revised Commission map can be found here:

<https://gismontgomery.maps.arcgis.com/apps/webappviewer/index.html?id=09946d3be6e94343b74a2af99ee82b7e>

This report contains:

Addendum

Pages

1-4

Alternative format requests for people with disabilities. If you need assistance accessing this report you may [submit alternative format requests](#) to the ADA Compliance Manager. The ADA Compliance Manager can also be reached at 240-777-6197 (TTY 240-777-6196) or at adacompliance@montgomerycountymd.gov

MEMORANDUM

ADDENDUM
December 6, 2021

TO: County Council

FROM: Pamela Dunn, Senior Legislative Analyst
Jeffrey L. Zyontz, Council Senior Fellow

SUBJECT: Revised Map for Redistricting – Derwood/Redland

Background

On Thursday, December 2, a staff report for agenda item #4A was posted. The report includes a revised map of redistricting. An interactive version of the proposed, revised map can be found here:

<https://gismontgomery.maps.arcgis.com/apps/webappviewer/index.html?id=09946d3be6e94343b74a2af99ee82b7e>

The report describes the proposed map as one that accommodates as many refinements as possible, following guidance provided by the Council at its November 30 worksession. However, in evaluating requested changes to the redistricting map, staff focused primarily on changes where an initial assessment indicated such an adjustment was possible. In doing this, staff neglected to reevaluate changes to district boundaries in the Derwood and Redland area.

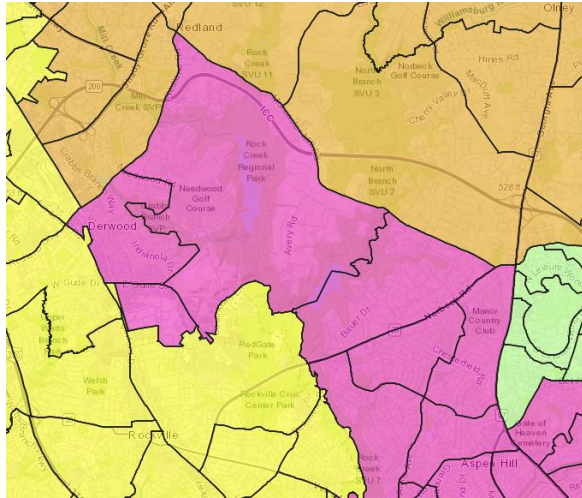
Further Refinements to the Commission’s Map

1. Derwood and Redland

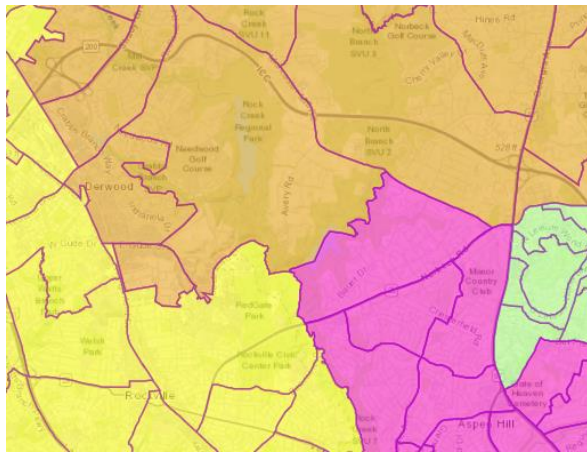
Several community members requested precincts in the Derwood area, Precincts 04-019 and 04-036 be moved from District 6 (pink) to District 7 (Orange). Staff’s initial evaluation of this area resulted in two observations. One, moving only Precincts 04-019 and 04-036, would create a horseshoe shape around a significant portion of Precinct 04-034, the Redland area (which would affect compactness), therefore if the Derwood area precincts are moved, the Redland area precinct should be moved as well. Two, without any other changes to the map, moving these three precincts from District 6 to District 7 violates the 10% Voting Rights Act rule.

Now, given other refinements to the map (primarily the changes for the Kemp Mill community and the Aurora Hills/Cedar Grove community which shift enough population into District 6 and enough population out of District 7), the Derwood and Redland communities can be placed in District 7. When Precincts 04-019, 04-034 and 4-036 are moved from District 6 to District 7, the total deviation across all districts is 9.04%, which is within the 10% rule.

Revised Redistricting Commission Map



Reevaluated, revised Area for Derwood and Redland

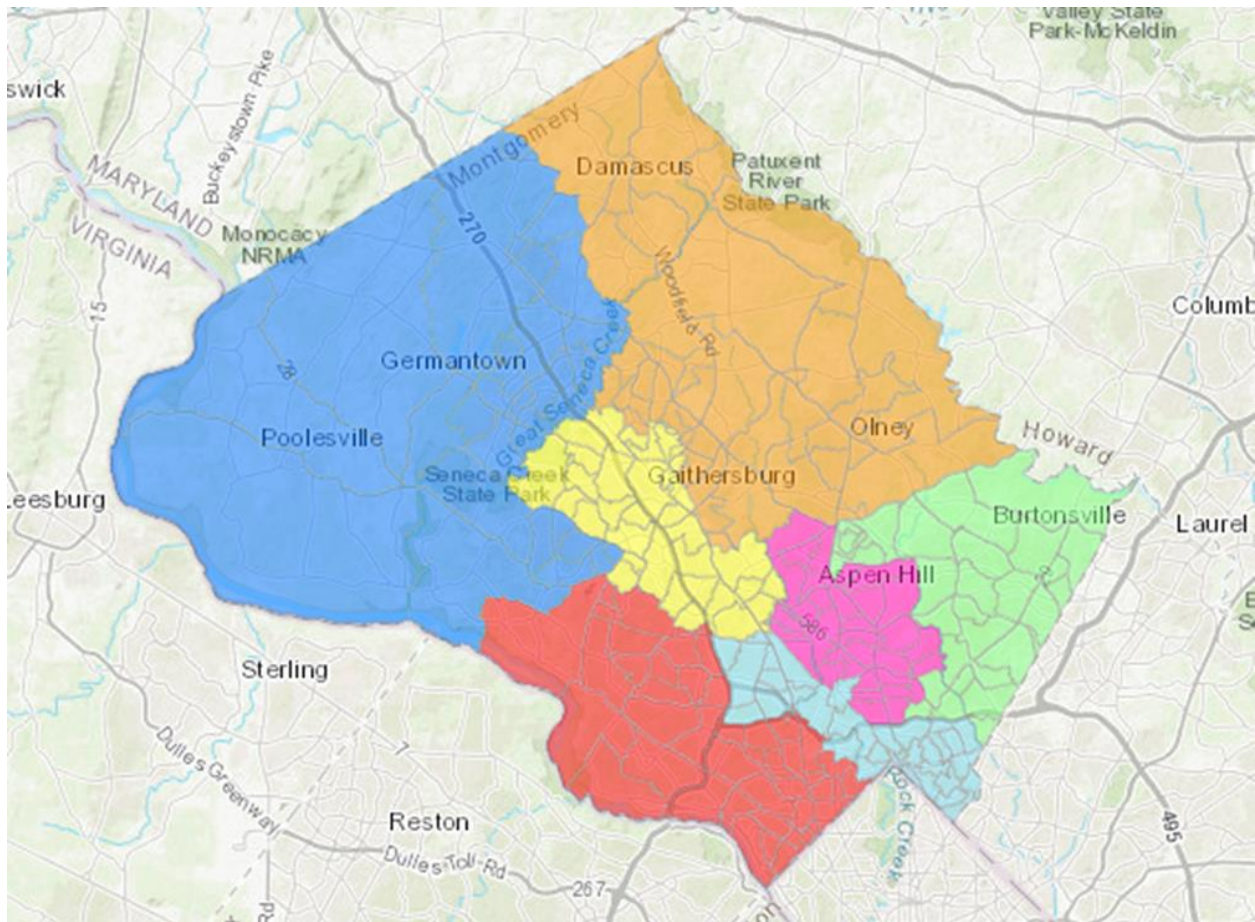


An additional benefit of this change is that it strengthens the Hispanic plurality in District 6. The staff report of December 2 noted that the movement of precincts from District 5 into District 6, to keep the Kemp Mill community together, resulted in a slight decrease in the percentage of Hispanic residents in District 6. However, the Hispanic plurality was maintained. The changes for Derwood and Redland result in an increase in the percentage of Hispanic residents in District 6 as compared to the revised map **and** restore the Hispanic plurality to the level proposed by the Redistricting Commission map.

Making this further refinement to move the Derwood and Redland communities from District 6 to District 7, in addition to the changes¹ noted in the staff report of December 2, results in the following Countywide map²:

¹ Changes numbered 1 through 5 in the staff report of December 2, 2021.

² The change to show the Ken-Gar community in District 4 does not yet appear on this map as it requires redrawing the voting precinct boundary line. A map depicting all changes, including Ken-Gar, will be available for the Council's review.



Below is the population and demographic data for the above map.

District	Asian	Black	Hispanic	Other	White	Total
1	16.2	4.9	8.1	5.7	65.2	155,015
2	24.3	19.5	17.4	5.4	33.4	158,833
3	20.5	13.7	22.4	5.4	38.0	158,980
4	9.0	20.8	17.5	6.0	46.7	145,291
5	12.1	37.1	20.5	4.9	25.4	148,184
6	11.6	17.0	35.5	5.2	30.7	145,619
7	12.4	15.2	22.7	5.6	43.1	150,788

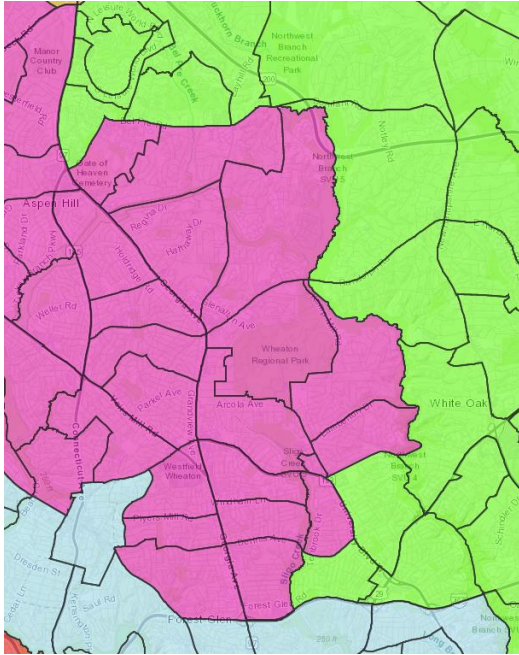
2. Four Corners

The staff report of December 2 stated that two changes could not be achieved in the revised map. One involved the Derwood/Redland community which, as described above, is possible with other proposed changes (more specifically it can be accommodated due to the changes for Kemp Mill and Aurora Hills). The other change involves the Four Corners community.

Reevaluating this change, a suggestion was made to move Precinct 13-055 and/or Precinct 13-056 from District 6 to District 5, increasing the population of District 5 such that the two

precincts north of the Beltway, Precincts 13-019 and 13-023, could be moved into District 4 from District 5. Below is a screen shot of the revised map in this area.

Revised Redistricting Commission Map



Looking at the suggested change, the first thing to note is that only one of the two precincts could be accommodated by such a move. Precincts 13-055 and 13-056 have more than 11,000 residents combined. Moving both precincts out of District 6 would cause too great a deviation in the population across all districts. For compactness-sake the more appropriate precinct to consider, if only one is moved, is Precinct 13-055. If this precinct moves from District 6 to District 5, in conjunction with the changes³ in the staff report of December 2, the total deviation across all districts becomes 8.94%, meeting the 10% rule.

While race was not a determining factor used in establishing district boundaries the resulting demographic make-up of the districts received widespread support. For the first time, two Council districts would have a non-White plurality. Under the Commission map and the revised Commission map, District 5 has a Black plurality and District 6 has a Hispanic plurality. As noted in the December 2 staff report, the adjustment for the Kemp Mill community decreased slightly the percentage Hispanic population in District 6, while still maintaining its plurality.

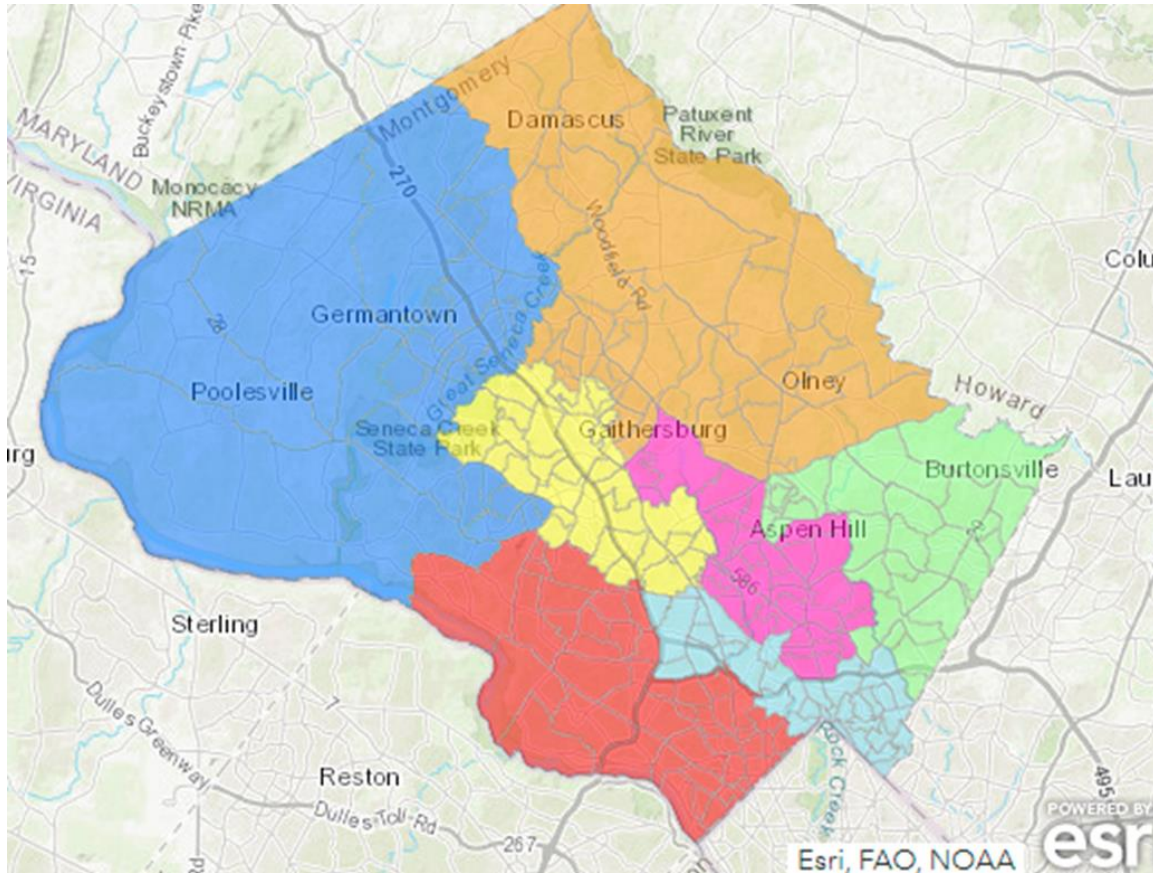
The change for Four Corners noted above results in a further decrease (in conjunction with the change for the Kemp Mill community) in the percentage Hispanic population of District 6. The Hispanic population retains a plurality (at 34.3%) but one that is closer to the percentage of the White population in District 6 (at 32.2%).

The second major observation related to the Four Corners request is that it cannot be made in conjunction with the request for the Derwood/Redland community. As with most adjustments to

³ Changes numbered 1 through 5 in the staff report of December 2, 2021.

the map, some combination of changes can be made but not all. The change for Four Corners can be made with the other changes suggested in the December 2 staff report. The changes for Derwood/Redland can be made with the other changes suggested in the December 2 staff report. But, if the changes for both are made, the total deviation across all districts exceeds 11%.

Making the further refinement for the Four Corners community, in addition to the changes noted in the staff report of December 2, results in the following Countywide map⁴:



Below is the population and demographic data for the above map.

District	Asian	Black	Hispanic	Other	White	Total
1	16.2	4.9	8.1	5.7	65.2	155,015
2	24.3	19.5	17.4	5.4	33.4	158,833
3	20.5	13.7	22.4	5.4	38.0	158,980
4	8.9	20.3	17.3	6.0	47.5	151,888
5	12.2	38.2	21.7	4.9	23.0	146,709
6	12.1	16.1	34.3	5.3	32.2	145,774
7	12.1	15.5	23.0	5.6	43.8	145,511

⁴ The change to show the Ken-Gar community in District 4 does not yet appear on this map as it requires redrawing the voting precinct boundary line. A map depicting all changes, including Ken-Gar, will be available for the Council’s review.