

Clerks Note: Attachments reattached to reflect correct plat exhibits X and F

Resolution No.:	<u>19-1411</u>
Introduced:	<u>October 18, 2022</u>
Adopted:	<u>October 18, 2022</u>

**COUNTY COUNCIL
FOR MONTGOMERY COUNTY, MARYLAND**

Lead Sponsor: County Council

SUBJECT: DOT Docket Nos. AB772
Abandonment – Portions of Old Georgetown Road and Executive Boulevard
Rights of Ways
Rockville, 4th Election District

Background

1. By letter dated May 20, 2020, the Montgomery County Department of Transportation (the “Applicant”) petitioned for an abandonment of portions of the Old Georgetown Road and Executive Boulevard public rights of ways within the Metro West District of White Flint. The areas to be abandoned consist of 23,886 square feet, more or less, of Old Georgetown Road and 3,046 square feet, more or less, of Executive Boulevard.
2. A Public Hearing to consider the abandonment proposal was held on September 14, 2020 by the designee of the County Executive. The public hearing record was re-opened at the request of the Applicant in August 2022 and an additional comment period was held open until September 12, 2022.
3. The County Executive forwarded to the County Council the application for abandonment, a report based on the record of the proceedings, together with exhibits relied upon and a transcription of the hearing, and recommended approval of the proposed abandonment request subject to conditions contained in the Executive’s report.

Action

The County Council for Montgomery County, Maryland, finds that the portion of the rights of ways for Old Georgetown Road and Executive Boulevard consisting respectively of 23,886 square feet, more or less and 3,046 square feet, more or less, that is proposed for abandonment (the “Abandonment Area”) is no longer necessary for public use pursuant to Section 49-63 of the Montgomery County Code, and hereby approves the abandonment request subject to the following conditions which must be satisfied at Applicant’s sole cost and expense prior to the abandonment becoming effective:

1. That the Applicant must, at its sole cost, prepare and record a new plat in accordance with County Code Section 49-65.

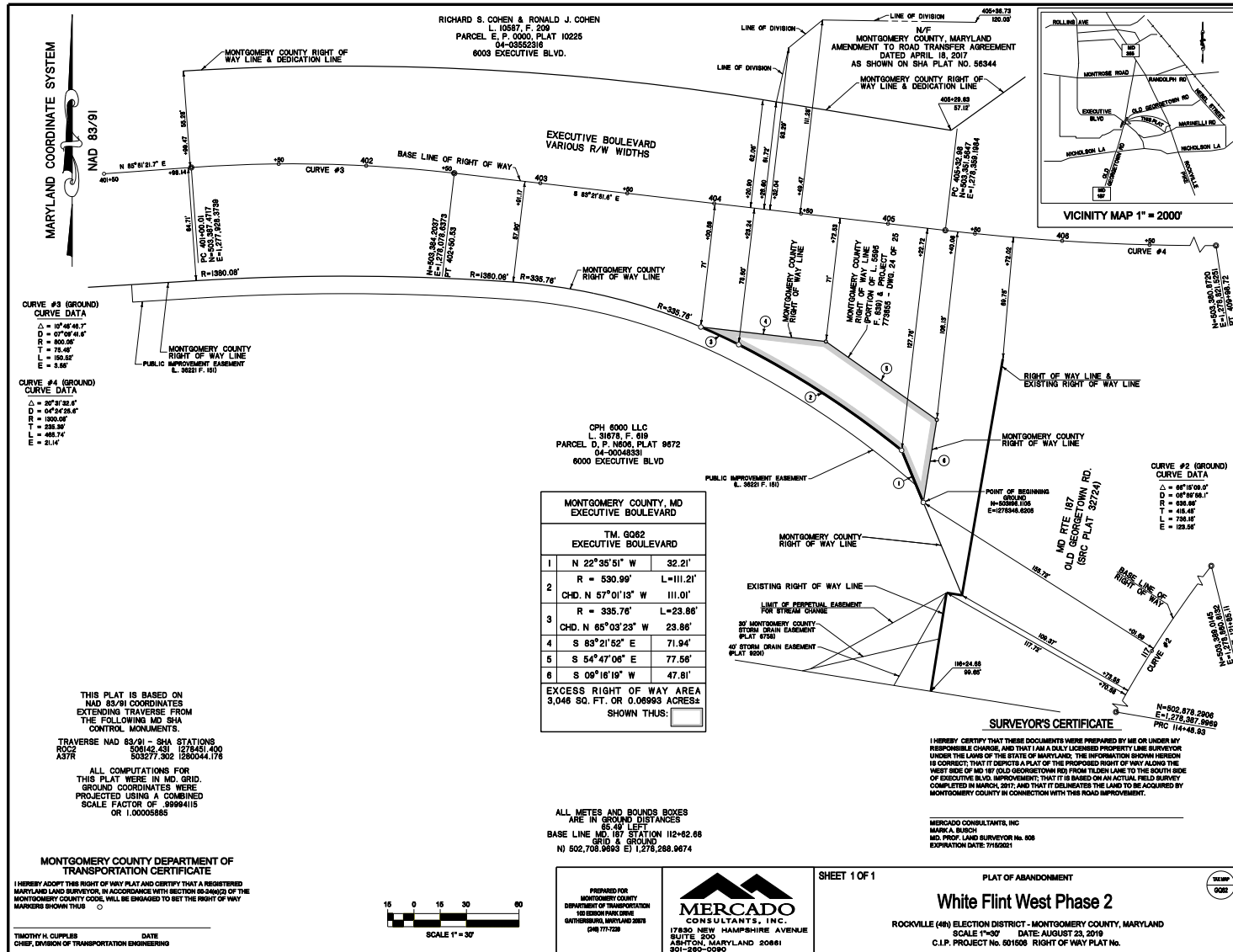
The County Attorney must record among the Land Records of Montgomery County, Maryland, a copy of this Resolution approving the abandonment of the subject area.

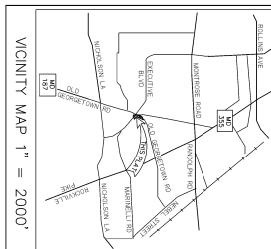
Any person aggrieved by the action of the Council for the abandonments may appeal to the Circuit Court within 30 days after the date such action is taken by Council.

This is a correct copy of Council Action.

A handwritten signature in cursive script, appearing to read "Judy Rupp", is written over a horizontal line.

Judy Rupp
Clerk of the Council



[illegible]

**FORMER MD 187
OLD GEORGETOWN ROAD
SHA PLAT 81788**

REC'D	FOLIO	LIBER
1	R = 576.65' L=46.13'	
2	S 20°27'30" W 45.12'	
3	S 17°08'28" W 50.96'	
4	N 58°17'03" W 40.96'	
5	R = 586.65' L=38.05'	
6	CHD S 29°51'28" W 38.04'	
7	N 35°13'50" W 17.24'	
8	N 09°16'19" W 183.34'	
9	R = 1370.08' L=196.59'	
10	CHD N 84°03'19" E 196.42'	
11	R = 586.65' L=129.86'	
12	CHD S 56°35'11" W 129.60'	
13	R = 576.65' L=212.08'	
14	CHD S 56°16'33" W 210.89'	
15	R = 576.65' L=212.08'	
16	CHD S 56°16'33" W 210.89'	
17	R = 576.65' L=212.08'	
18	CHD S 56°16'33" W 210.89'	
19	R = 576.65' L=212.08'	
20	CHD S 56°16'33" W 210.89'	
21	R = 576.65' L=212.08'	
22	CHD S 56°16'33" W 210.89'	
23	R = 576.65' L=212.08'	
24	CHD S 56°16'33" W 210.89'	
25	R = 576.65' L=212.08'	
26	CHD S 56°16'33" W 210.89'	
27	R = 576.65' L=212.08'	
28	CHD S 56°16'33" W 210.89'	
29	R = 576.65' L=212.08'	
30	CHD S 56°16'33" W 210.89'	
31	R = 576.65' L=212.08'	
32	CHD S 56°16'33" W 210.89'	
33	R = 576.65' L=212.08'	
34	CHD S 56°16'33" W 210.89'	
35	R = 576.65' L=212.08'	
36	CHD S 56°16'33" W 210.89'	
37	R = 576.65' L=212.08'	
38	CHD S 56°16'33" W 210.89'	
39	R = 576.65' L=212.08'	
40	CHD S 56°16'33" W 210.89'	
41	R = 576.65' L=212.08'	
42	CHD S 56°16'33" W 210.89'	
43	R = 576.65' L=212.08'	
44	CHD S 56°16'33" W 210.89'	
45	R = 576.65' L=212.08'	
46	CHD S 56°16'33" W 210.89'	
47	R = 576.65' L=212.08'	
48	CHD S 56°16'33" W 210.89'	
49	R = 576.65' L=212.08'	
50	CHD S 56°16'33" W 210.89'	
51	R = 576.65' L=212.08'	
52	CHD S 56°16'33" W 210.89'	
53	R = 576.65' L=212.08'	
54	CHD S 56°16'33" W 210.89'	
55	R = 576.65' L=212.08'	
56	CHD S 56°16'33" W 210.89'	
57	R = 576.65' L=212.08'	
58	CHD S 56°16'33" W 210.89'	
59	R = 576.65' L=212.08'	
60	CHD S 56°16'33" W 210.89'	
61	R = 576.65' L=212.08'	
62	CHD S 56°16'33" W 210.89'	
63	R = 576.65' L=212.08'	
64	CHD S 56°16'33" W 210.89'	
65	R = 576.65' L=212.08'	
66	CHD S 56°16'33" W 210.89'	
67	R = 576.65' L=212.08'	
68	CHD S 56°16'33" W 210.89'	
69	R = 576.65' L=212.08'	
70	CHD S 56°16'33" W 210.89'	
71	R = 576.65' L=212.08'	
72	CHD S 56°16'33" W 210.89'	
73	R = 576.65' L=212.08'	
74	CHD S 56°16'33" W 210.89'	
75	R = 576.65' L=212.08'	
76	CHD S 56°16'33" W 210.89'	
77	R = 576.65' L=212.08'	
78	CHD S 56°16'33" W 210.89'	
79	R = 576.65' L=212.08'	
80	CHD S 56°16'33" W 210.89'	
81	R = 576.65' L=212.08'	
82	CHD S 56°16'33" W 210.89'	
83	R = 576.65' L=212.08'	
84	CHD S 56°16'33" W 210.89'	
85	R	