



Creekside at Cabin Branch



Boyd's, MD 20841

[CLICK HERE FOR MAP](#)

MPDU UNIT TYPE: *Townhouse*
Price: *\$226,417*
Bedrooms: *3*
Baths: *2.5*
Square Footage: *1,595 sq. ft.*

HOA Fee: *\$180 per month*

One-time Set-up Fee: *\$125.00*

Front Foot Benefit Charge : *\$700 per year for 30 yrs.*

Closing Costs Estimates: *\$9,057*

Earnest Money Deposit: *\$2,264*

Capital Contribution *\$1,000*

Closing Cost Credit to Buyer: *\$6,595*

INTERIOR: (Entrance varies with homestyle)

Ground Level: *One Car Garage, Foyer, Bedroom, 1 Full Bath*

First Level: *Living & Dining Room, 1/2 Bath, Kitchen*

Upper Level: *Two Bedrooms, 1 Full Bath, Washer/Dryer Hookup (inside Bathroom)*

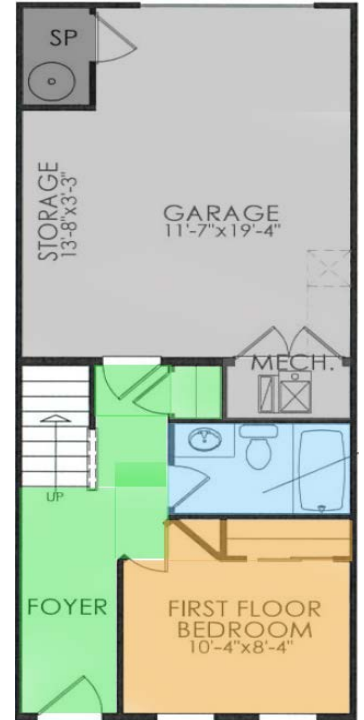
- Central AC and Heating System
- Pre-wired Cable TV and Phone System

APPLIANCES:

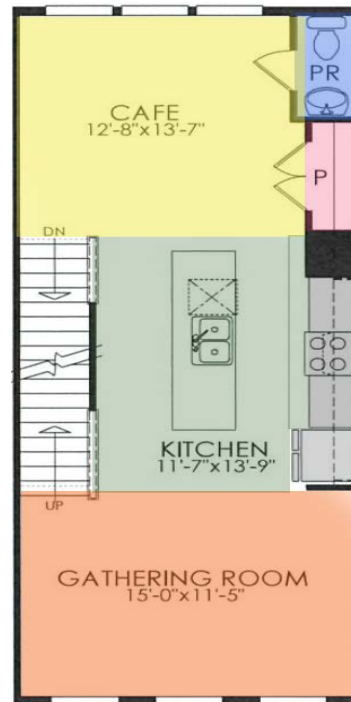
- Refrigerator
- Dishwasher
- Range
- Range Hood
- Garbage Disposal
- Washer and Dryer Hook-ups

EXTERIOR:

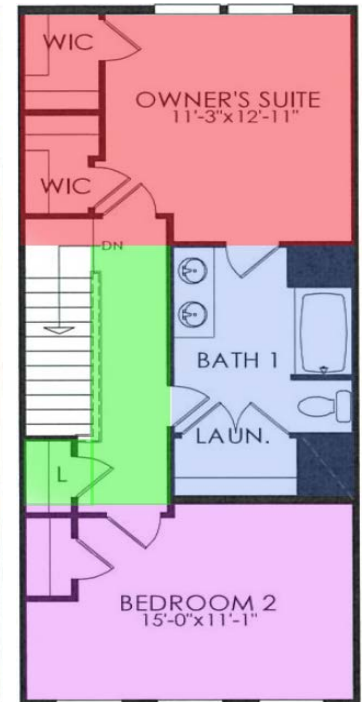
- Professionally Managed and Maintained Common Areas



Ground Floor



First Floor



Second Floor

FEATURED FLOOR PLANS