



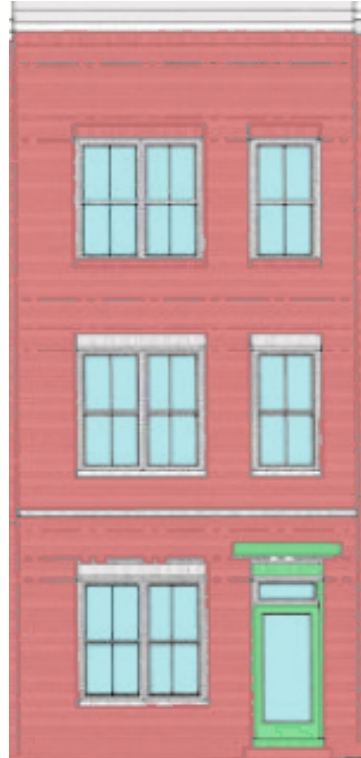
# Northpark Towns



**5\*\*\* Josiah Henson Pkwy.  
Bethesda, MD 20852**

**CLICK HERE FOR A MAP**

<b>MPDU UNIT</b>	<b><i>Townhouse</i></b>
<b>TYPE: Price:</b>	<b>\$228,709</b>
<b>Bedrooms:</b>	<b>3</b>
<b>Baths:</b>	<b>2</b>
<b>Square Footage:</b>	<b>1,425 sq. ft.</b>
<b>HOA Fee:</b>	<b>\$215.71 per month</b>
<b>Front Foot Benefit Charge :</b>	<b>\$1,130 per year for 30 yrs.</b>
<b>Closing Costs Estimates:</b>	<b>\$9,148</b>
<b>Earnest Money Deposit:</b>	<b>\$2,287</b>
<b>Capital Contributioun:</b>	<b>\$500</b>
<b>Closing Cost Credit to Buyer:</b>	<b>\$6,661.42</b>
<b>One Time HOA Set Up Fee:</b>	<b>\$71</b>
<b>One Time Water &amp; Sewer Setup Fee:</b>	<b>\$25</b>



Ground Floor

## **INTERIOR:**

- Ground Level:** *One Car Garage, One Bedroom, one Full Bath*
- First Level:** *Living & Dining Room, Kitchen*
- Upper Level:** *Two Bedrooms, 1 Full Bath, Washer and Dryer Hookups*
- Central AC and Heating System
- Pre-wired Cable TV and Phone System

## **APPLIANCES:**

- Refrigerator
- Dishwasher
- Range
- Range Hood
- Garbage Disposal
- Washer and Dryer Hook-ups

## **EXTERIOR:**

- Professionally Managed and Maintained

Common Areas



First Floor



Second Floor

**FEATURED FLOOR PLANS**