



# The Brownstones at Westbard



*Bethesda, MD 20816*

**CLICK HERE FOR MAP**

## **MPDU UNIT TYPE:**

Price: ***Townhouse***  
 \$225,368  
 Bedrooms: **3**  
 Baths: **2**  
 Square Footage: **2,126 sq. ft.**

Capital Contribution: **\$640**  
 HOA Fee: **\$160 per month**

HOA One-time Set-up Fee: **\$200**

Front Foot Benefit Charge : **\$1,540 per year for 30 yrs.**

Closing Costs Estimates: **\$9,015**  
 Earnest Money Deposit: **\$2,254**

Closing Cost Credit to Buyer: **\$6,564**

## **INTERIOR:**

**Ground Level:** *Two Car Garage, Trash Closet, Foyer*

**Second Level:** *Living & Dining Room, Kitchen, (Optional Half Bath)*

**Third Level:** *Two Bedrooms, 1 Full Bath, Washer Dryer Hookups*

**Top Level:** *Primary Bedroom, 1 Full Bath, Roof Terrace*

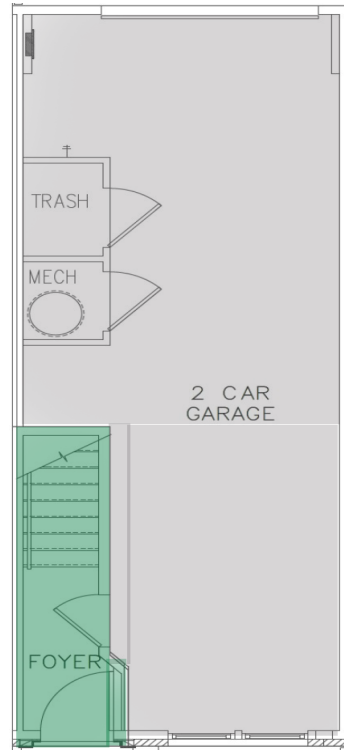
- ☐ Central AC and Heating System
- ☐ Pre-wired Cable TV and Phone System

## **APPLIANCES:**

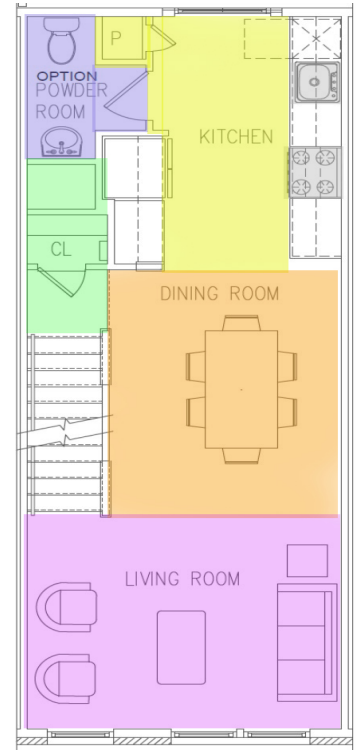
- ☐ Refrigerator
- ☐ Dishwasher
- ☐ Range
- ☐ Range Hood
- ☐ Garbage Disposal
- ☐ Washer and Dryer Hook-ups

## **EXTERIOR:**

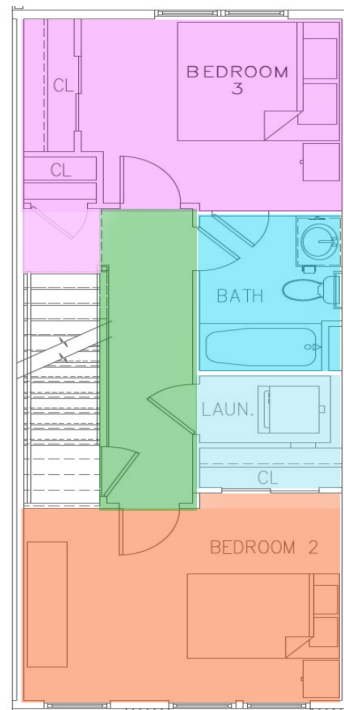
- ☐ Professionally Managed and Maintained Common Areas



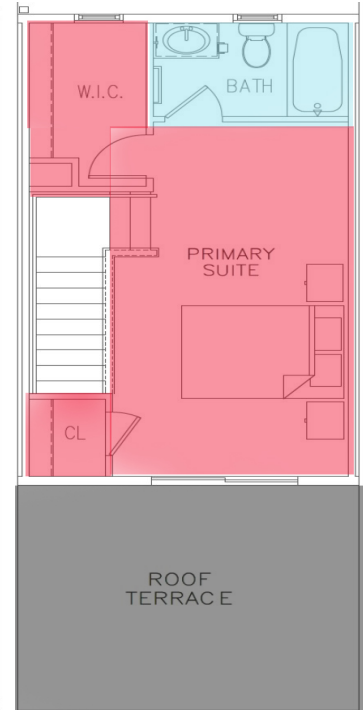
**Ground Floor**



**Second Floor**



**Third Floor**



**Top Floor**

**FEATURED FLOOR PLANS**