



# Strathmore View



*North Bethesda, MD 20895*

**CLICK HERE FOR MAP**

## MPDU UNIT TYPE:

Price: ***Townhouse***  
**\$225,368**

Bedrooms: **3**

Baths: **2**

Square Footage: **1,492 sq. ft.**

Capital Contribution: **\$572**

HOA Set Up Fee: **\$ 200 one-time**

HOA Fee: **\$143 per month**

Front Foot Benefit Charge : **\$1,950 per year  
for 30 yrs.**

Closing Costs Estimates: **\$9,015**

Earnest Money Deposit: **\$2,254**

Closing Cost Credit to Buyer: **\$6,564**

## INTERIOR:

**Ground Level:** *Two Car Garage, Trash Closet, Foyer*

**Second Level:** *Living & Dining Room, Kitchen, (Optional Half Bath)*

**Third Level:** *Two Bedrooms, 1 Full Bath, Washer Dryer Hookups*

**Top Level:** *Primary Bedroom, 1 Full Bath, Roof Terrace*

☐ Central AC and Heating System

☐ Pre-wired Cable TV and Phone System

## APPLIANCES:

☐ Refrigerator

☐ Dishwasher

☐ Range

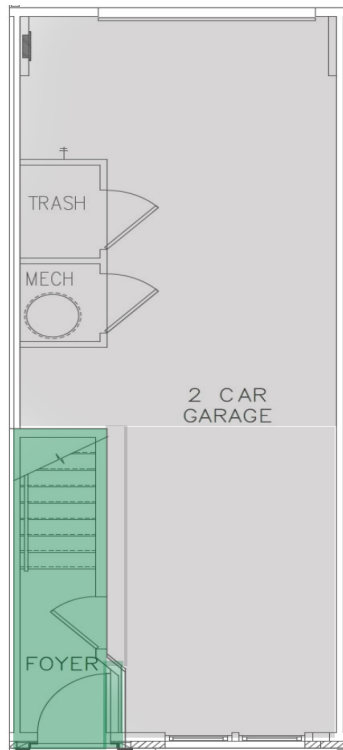
☐ Range Hood

☐ Garbage Disposal

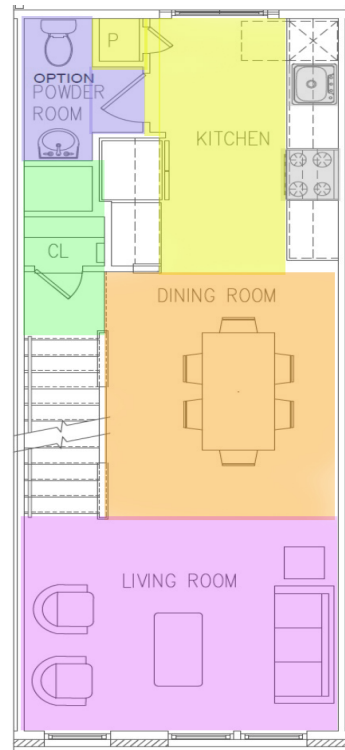
☐ Washer and Dryer Hook-ups

## EXTERIOR:

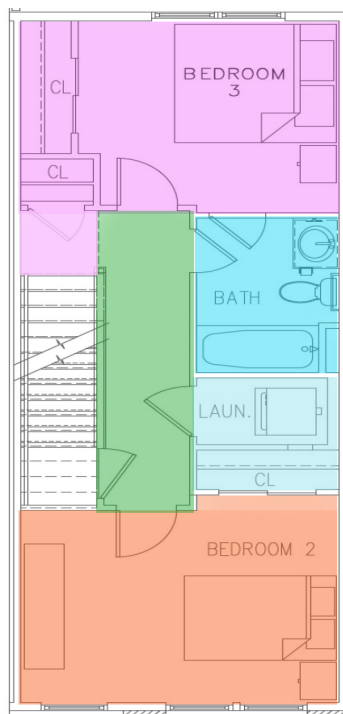
☐ Professionally Managed and Maintained Common Areas



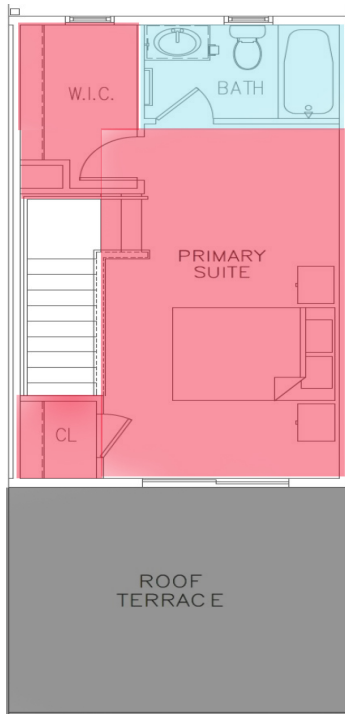
Ground Floor



Second Floor



Third Floor



Top Floor

**FEATURED FLOOR PLANS**