



PSTA The Grove



Rockville, MD 20850

CLICK HERE FOR A MAP

MPDU UNIT TYPE: *Piggyback Townhouse two-over-two*

Price: *\$206,509 - \$242,050*

Bedrooms: *3*

Baths: *2.5*

Square Footage: *1,302 - 1,800 sq. ft.*

HOA Fee: *\$150 per month*

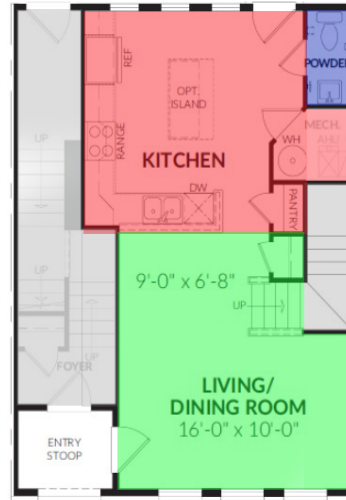
Front Foot Benefit Charge : *\$650 per year for 30 yrs.*

Closing Costs Estimates: *\$8,260-\$9,682*

Earnest Money Deposit: *\$2,065-\$2,421*

Capital Contribution *\$720*

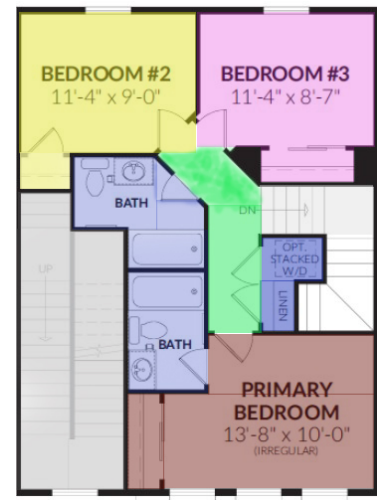
Closing Cost Credit to Buyer: *\$6,014-\$7,049*



First Floor

"The Aspen"

Second Floor



INTERIOR:

The Aspen

First Level: *Living Room, Dining Room, Kitchen, Half Bath*

Second Level: *Three Bedrooms with 2 Full Baths*

The Dayton

Third Level: *Living Room, Dining Room, Kitchen, Half Bath*

Fourth Level: *Three Bedrooms with 2 Full Baths*

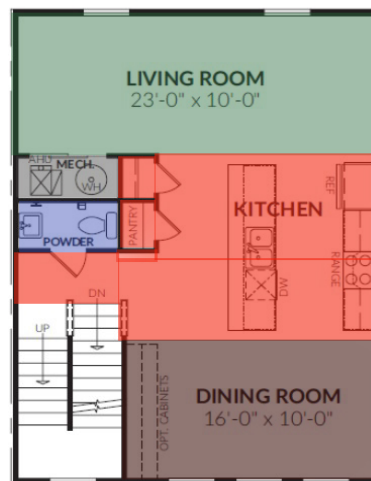
- ☐ Central AC and Heating System
- ☐ Pre-wired Cable TV and Phone System

APPLIANCES:

- ☐ Refrigerator
- ☐ Dishwasher
- ☐ Range
- ☐ Range Hood
- ☐ Garbage Disposal
- ☐ Washer and Dryer Hook-ups

EXTERIOR:

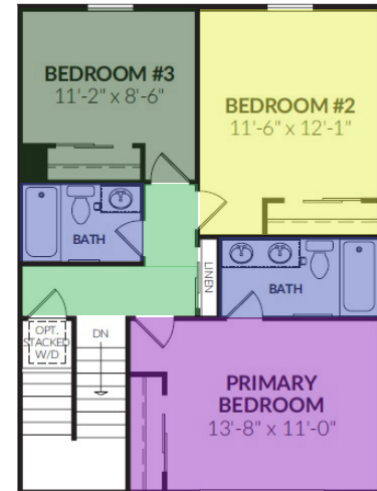
- ☐ Professionally Managed and Maintained Common Areas



Third Floor

"The Dayton"

Fourth Floor



FEATURED FLOOR PLANS