



THE LAUREN AT 4901 HAMPDEN LANE



4901 Hampden Ln, Unit 101

Bethesda MD 20814

[For A Map Click Here](#)

Text Anna Ganev at 301-332-2148 with your name, MPDU certificate #, Lender's Name and the amount of the loan you are approved for, and she is going to text you the house code.

MPDU UNIT TYPE: Condo Unit

Price: \$228,751

Earnest Money Deposit \$2,288

Bedrooms: 2

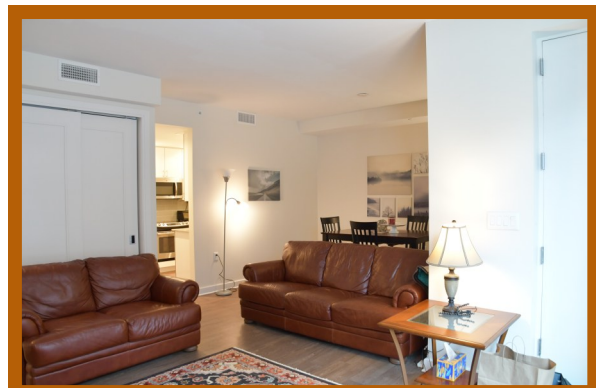
Bathrooms: 1.5

Square Footage: 1,318

Monthly Condo Fee: \$778

Est. property tax and non-tax charges for the first year of ownership: **\$1,520**

Year Built: 2016



Two level unit featuring Living Room, Dining Room, Kitchen, Half Bath, and a Coat Closet on the Main Level. The Kitchen has Granite Countertops and Stainless Steel Appliances.

The Lower Level consist of Two Bedrooms, and a Full Bathroom with Granite Countertops.

Both of the Bedrooms have sliding doors to the Patio.

The condo fee includes: water, sewer, master insurance, concierge, and management.

The Lauren is a luxury building in heart of Bethesda. It is located one block from the Metro, close to restaurants, shopping, the public library, community facilities and entertainment.



Anna Ganev, ABR,CBR,SRS,SRES,CIPS

Associate Broker in MD, DC and VA

7373 Wisconsin Ave #1700, Bethesda, MD 20814 240-497-1700

Cell: 301-332-2148

AnnaGanev@yahoo.com www.AnnaGanev.com



*All the information deemed reliable, but not guaranteed.

