



Montgomery Village Center



1006 Harper Vale Road
Montgomery Village, MD 20886

CLICK HERE FOR A MAP

MPDU UNIT TYPE: *Townhouse*
Price: *\$214,002*
Bedrooms: *3*
Baths: *3.5*
Square Footage: *1,567 sq. ft.*

HOA Fee: *\$112.37 per month*

Front Foot Benefit Charge : *\$600 per year for 30 yrs.*

Closing Costs Estimates: *\$8,560*
Earnest Money Deposit: *\$2,140*
Capital Contribution *N/A*

Closing Cost Credit to Buyer: *\$6,233*

INTERIOR:

Ground Level: *One Car Garage, Bedroom, Full Bathroom*

First Level: *Living Room, Kitchen, & Dining w/ Powder Room*

Upper Level: *Two Bedrooms with 2 Full Baths, Laundry Room (Washer/Dryer Hookups)*

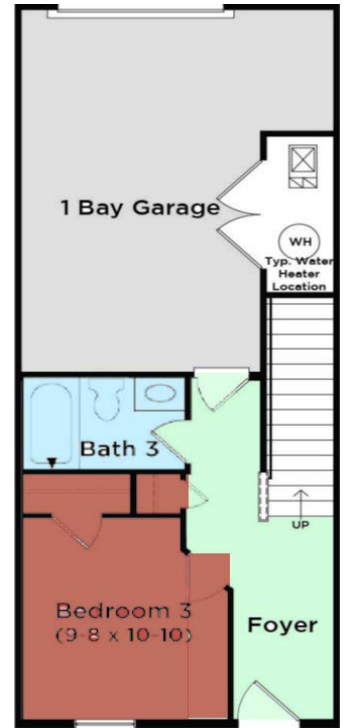
- Central AC and Heating System
- Pre-wired Cable TV and Phone System

APPLIANCES:

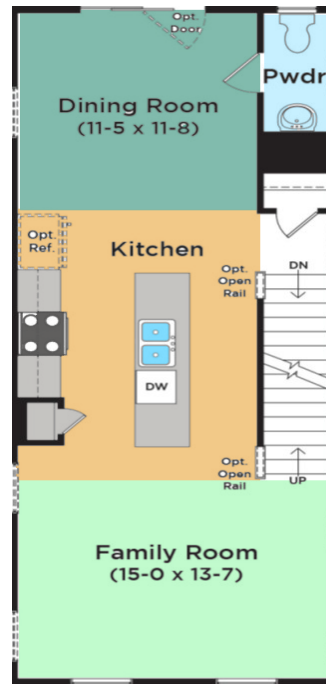
- Refrigerator
- Dishwasher
- Range
- Range Hood
- Garbage Disposal
- Washer and Dryer Hook-ups

EXTERIOR:

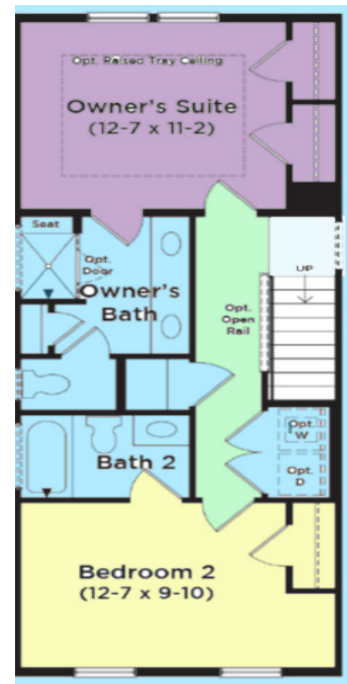
- Professionally Managed and Maintained Common Areas



Ground Floor



First Floor



Second Floor

FEATURED FLOOR PLANS